



Our Company Benefits

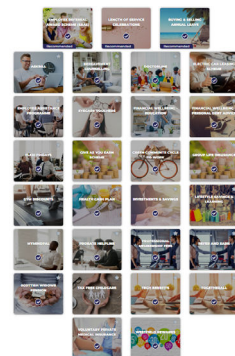
Welcome to ITI! Our expanding Rewards and Benefits offerings are detailed within this leaflet



smarthive

Our Benefits Platform: Smart Hive

Your Smart Hive employee benefits platform is where you can access your current and new benefits, available to you at the click of your fingers.



Our Company Benefits

Welcome to ITI Group!

Our expanding Rewards and Benefits offerings, available through our SmartHive platform, are listed below:

25 days Annual Leave, 8 Bank Holidays, plus buy/sell up to 5 days leave per year

Flexible Start and Finish Times

Start between 7-10am and finish between 3-6pm, plus Flexi Fridays (manager's discretion)

Life Assurance

Length of Service Celebrations

Employee Voice Forums

Eye Care Vouchers

Employee Referral Scheme

Earn money when you refer someone to come and work with us if they are offered the job

Pension Scheme

With workplace pensions advice

Employee Health Cash Plan

Available through Westfield Health (Salary Sacrifice)

Employee Social Events

Such as Christmas and/or summer parties

Exclusive Discounts and Savings

With leading retailers

Cycle to Work Scheme

Electric Vehicle Scheme

Professional Membership Fees

We pay your professional membership fees against our pre-approved list of recognised bodies

Charitable Giving Scheme



Tech Benefits

Gym Discounts

Professional Development Toolkit:

- Personal Development Plan
- Careers Map

Voluntary Private Medical Insurance

Employee Assistance Programme (EAP)

A comprehensive EAP called 'Healthy Extras' to help look after your Health & Wellbeing, which includes:

Access to Togetherall

A safe, anonymous online space to access mental health support and resources in confidence.

Doctor Line™

From anywhere in the world, 24 hours a day, you or your resident family can arrange a telephone or web call back from a practising UK GP.

24 Hour Advice and Information Line

Access to confidential legal, medical, or domestic issues guidance from experienced experts.

Westfield Rewards

Special offers, discount codes or cashback from over 1,000 leading restaurants, retailers and destinations.



For more information on any of the benefits listed here, contact: people@itigroup.co.uk